



P.LE CORTE D'APPELLO



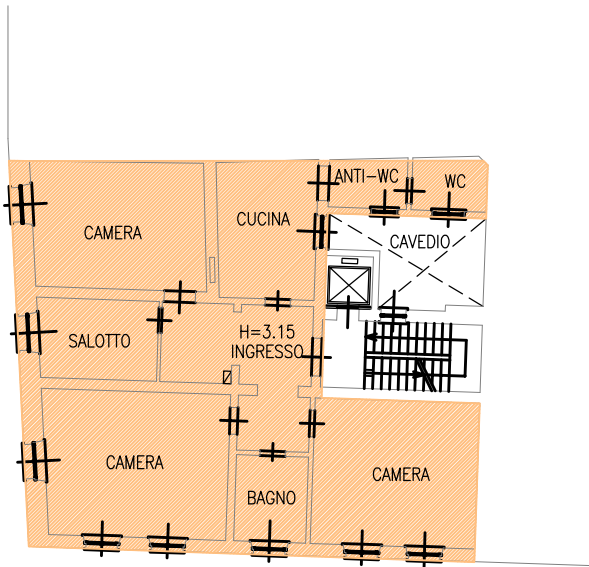
da indisponibile a disponibile



da disponibile a indisponibile

c_9337.Comune di Parma - Prot. 05/12/2024.0320391.E

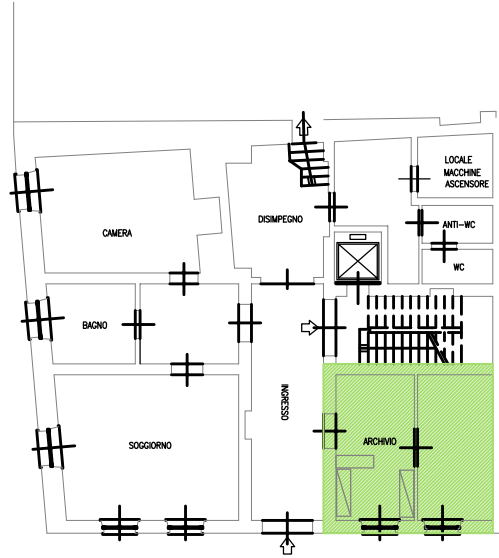
VIA CAVESTRO



P.LE CORTE D'APPELLO

PIANO TERZO

VIA CAVESTRO



P.LE CORTE D'APPELLO

PIANO TERRA



APADS - APADS - 1 - 2024-12-05 - 0007092