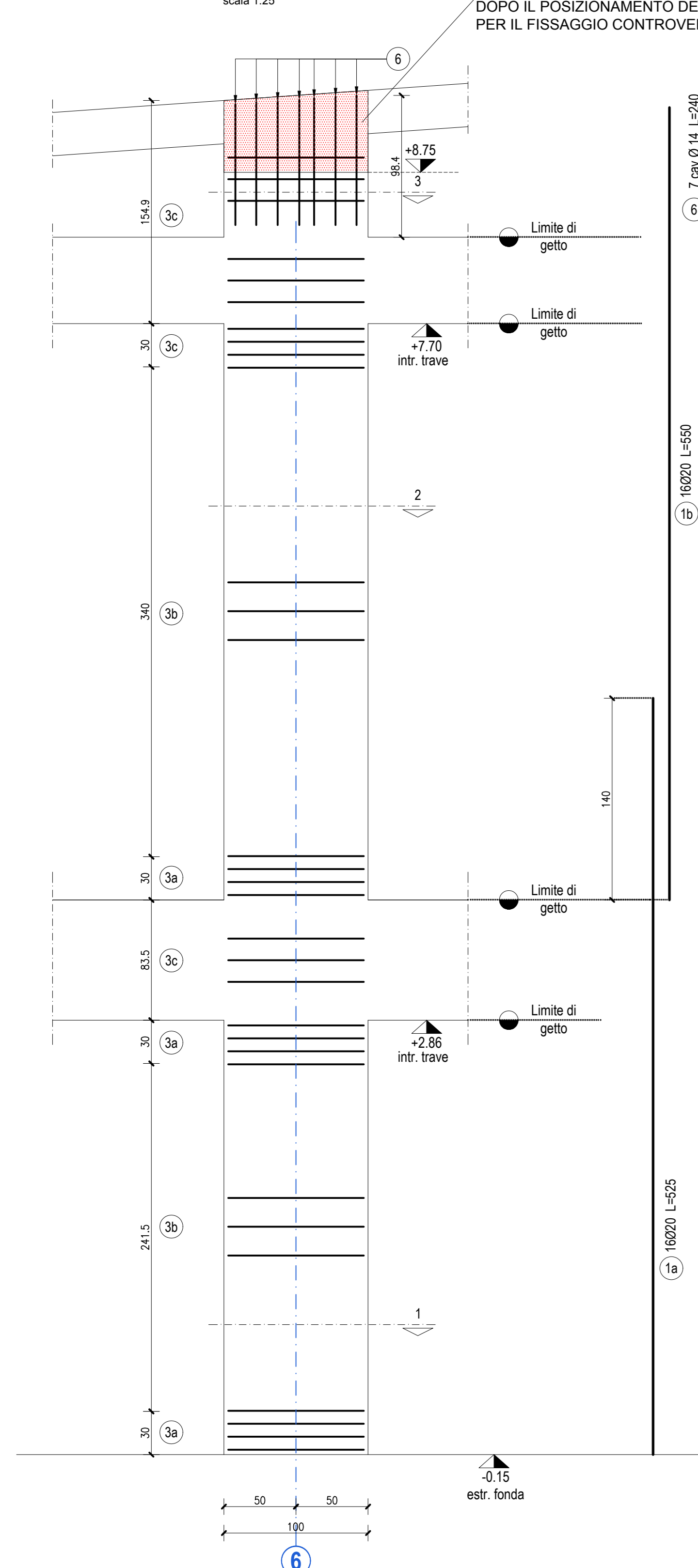
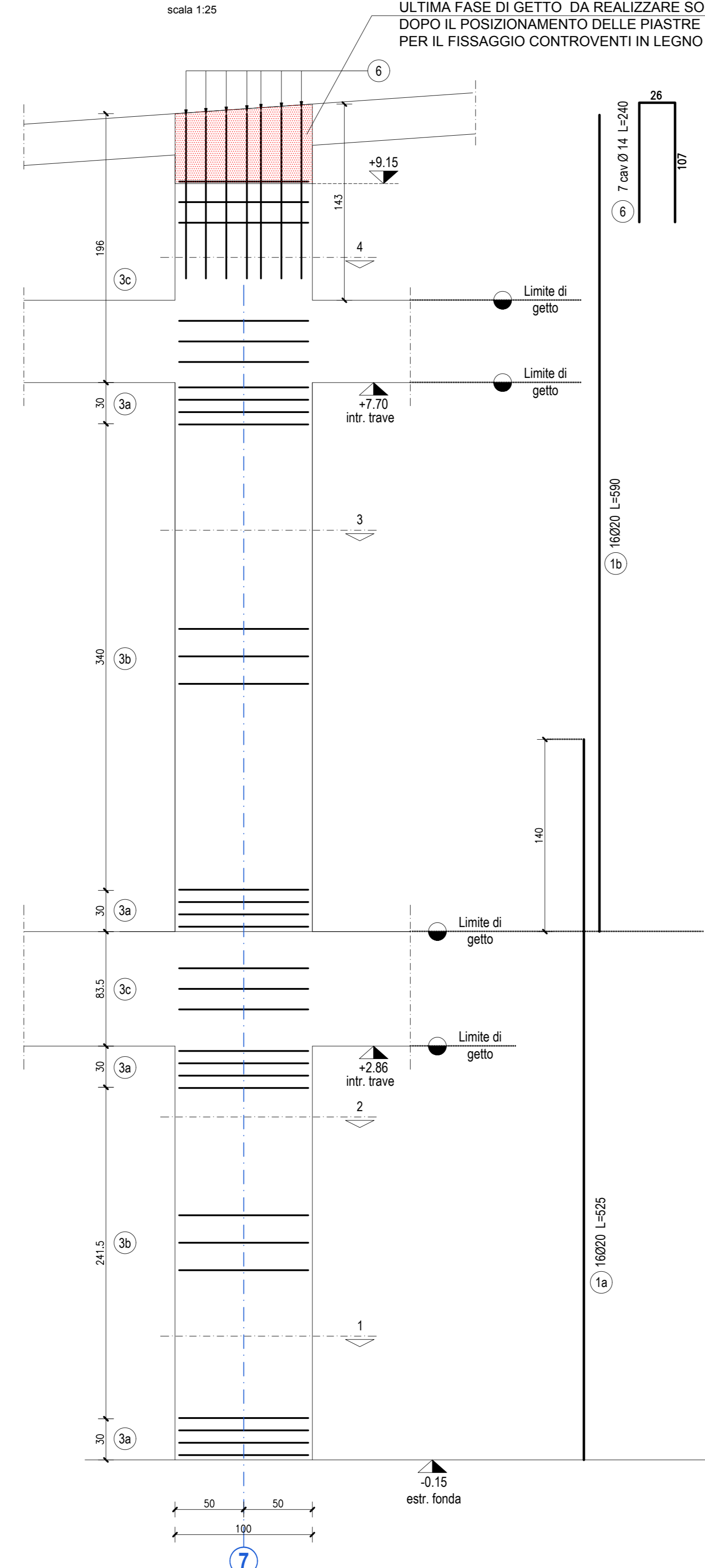


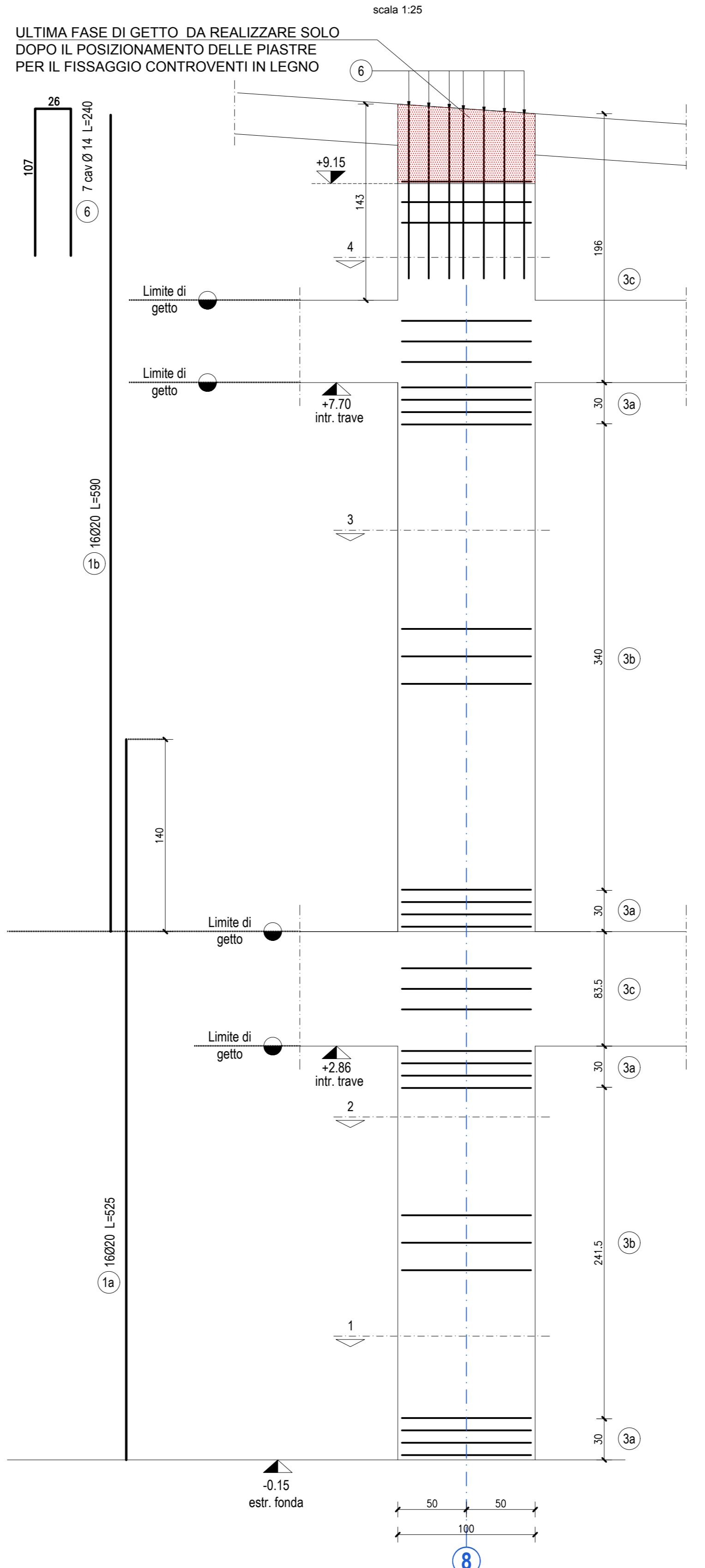
PILASTRO 'P2a'



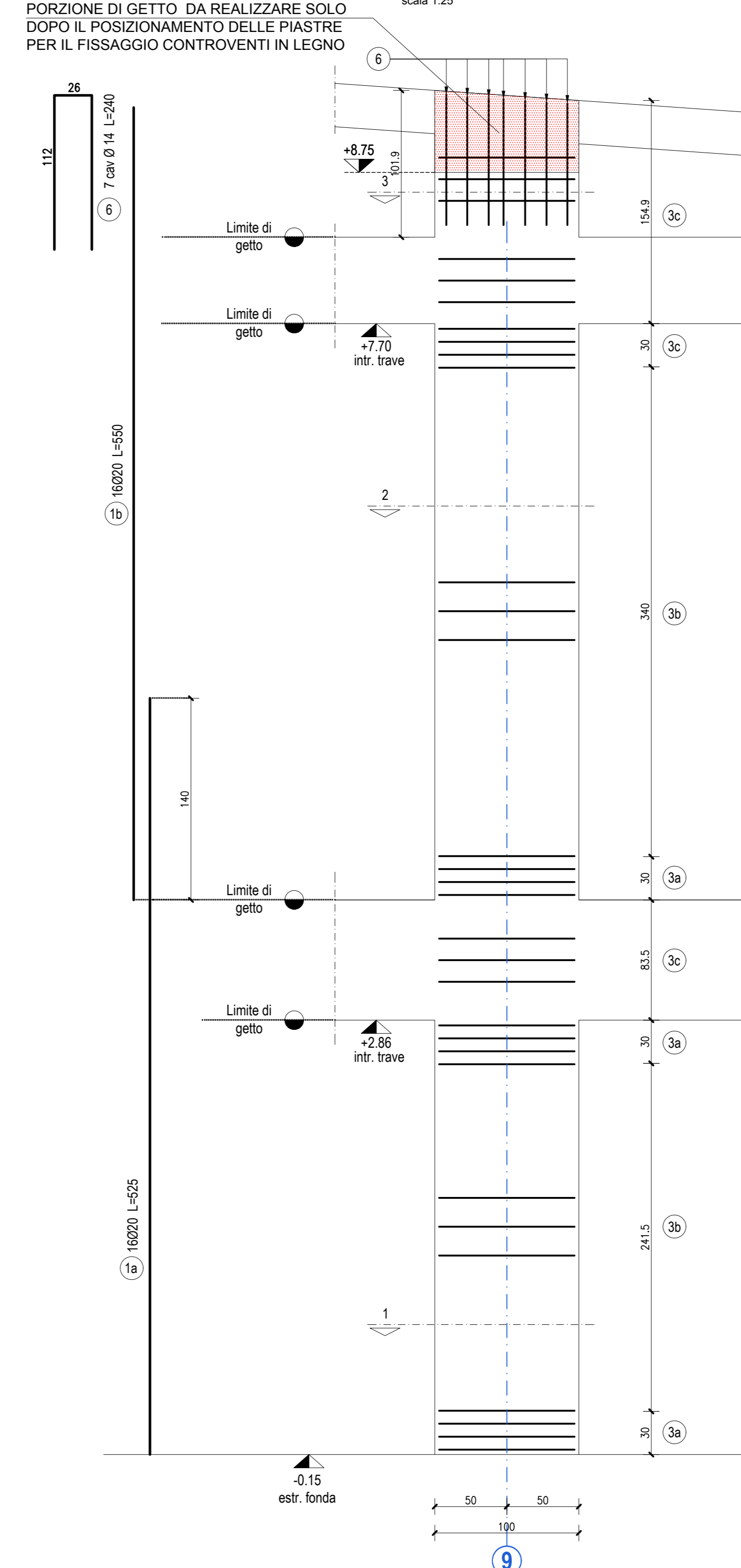
PILASTRO 'P2b'



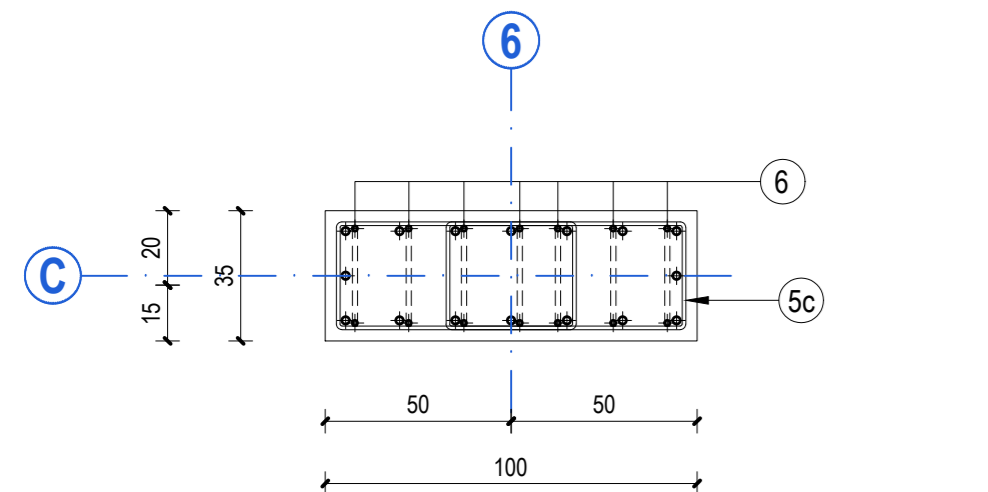
PILASTRO 'P2c'



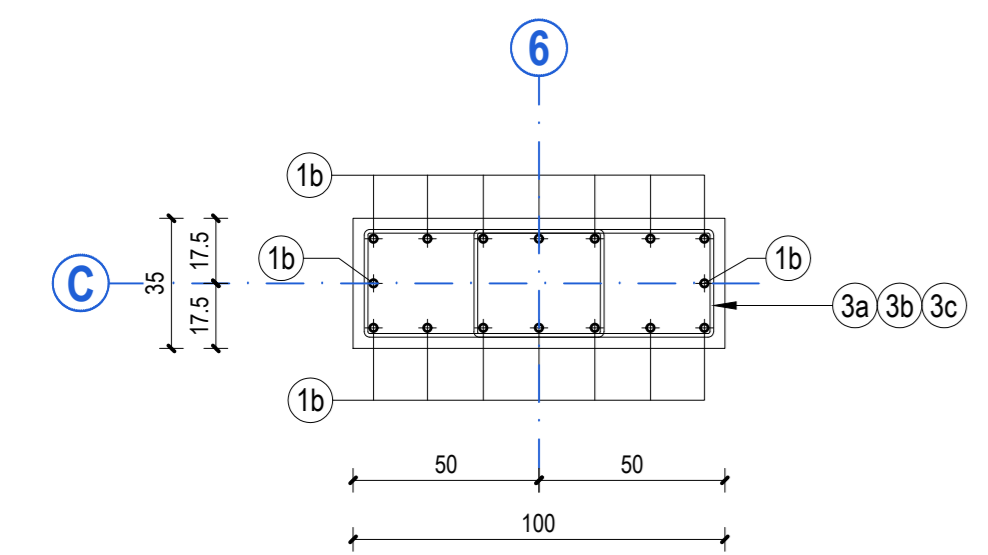
PILASTRO 'P2d'



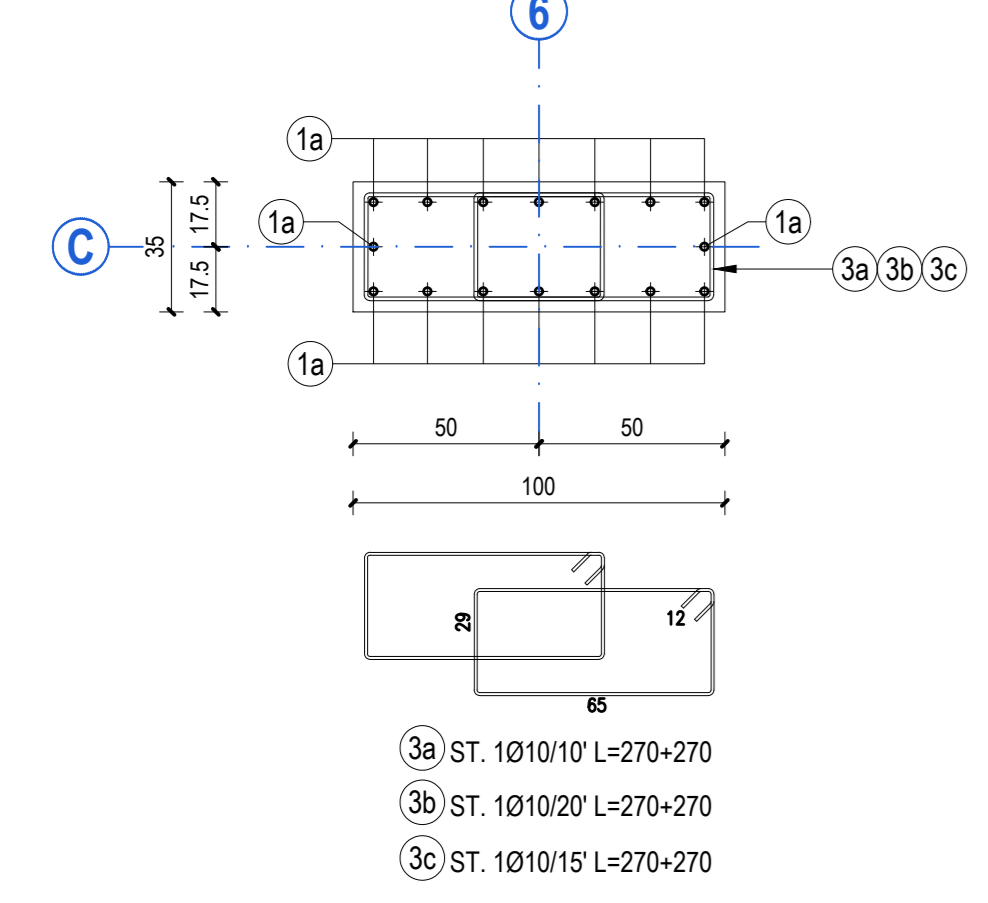
SEZIONE 3



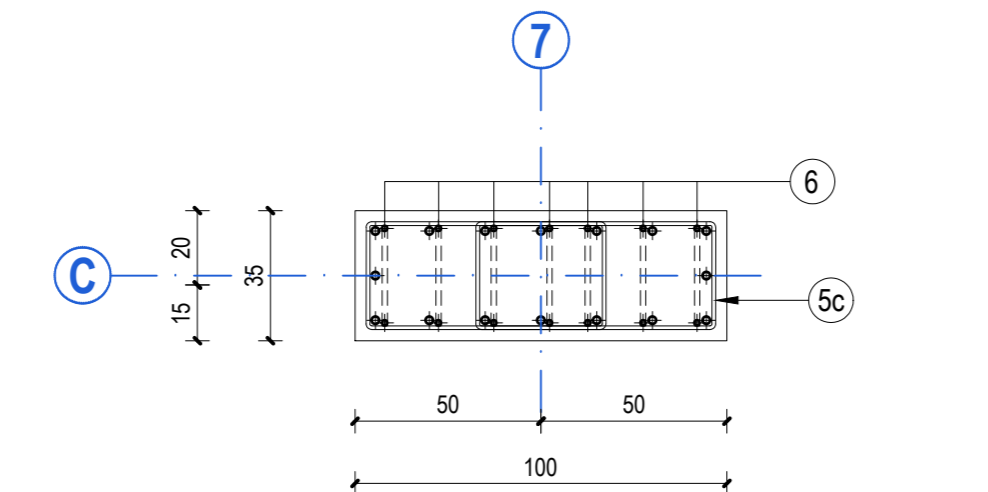
SEZIONE 2



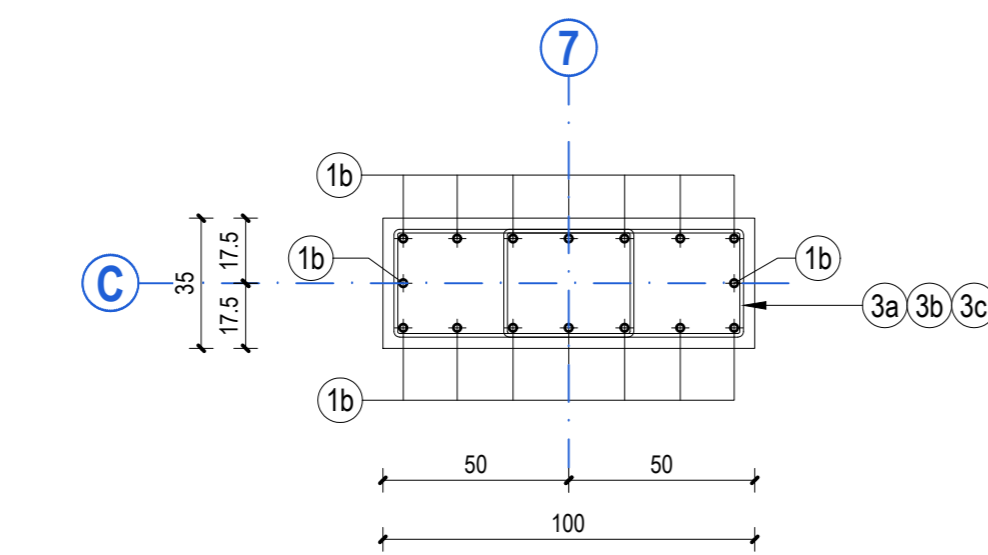
SEZIONE 1



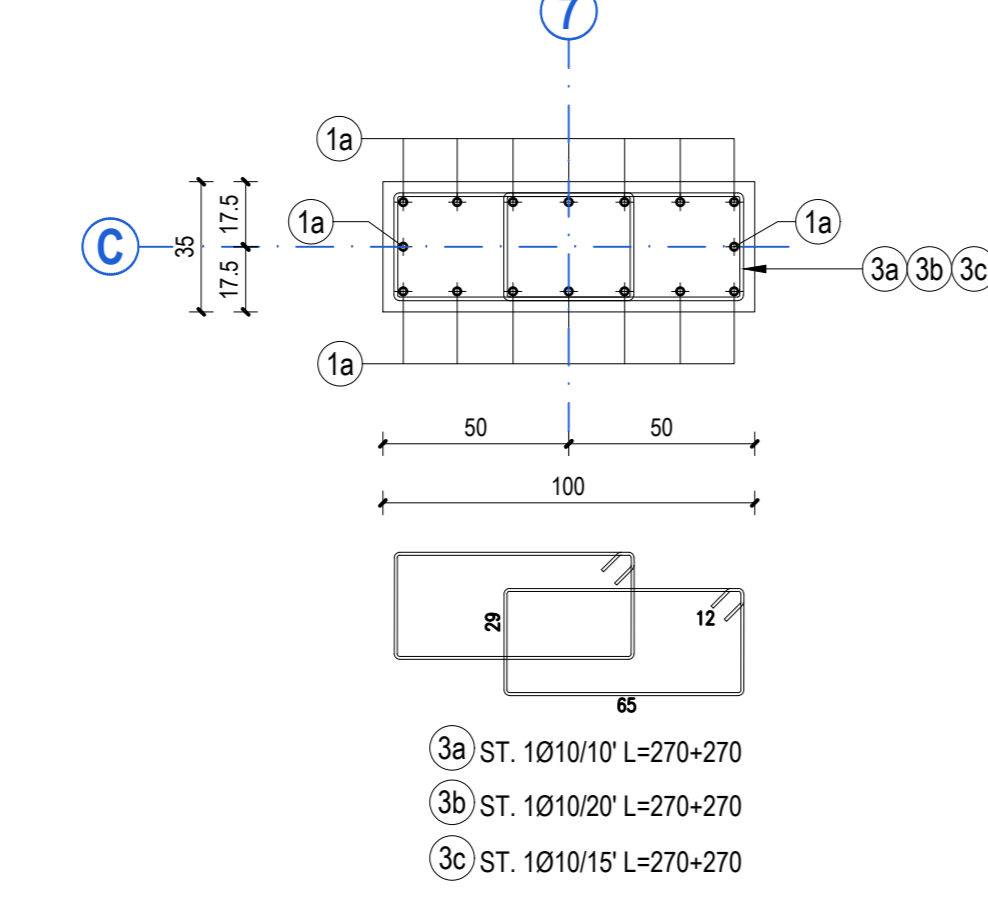
SEZIONE 3



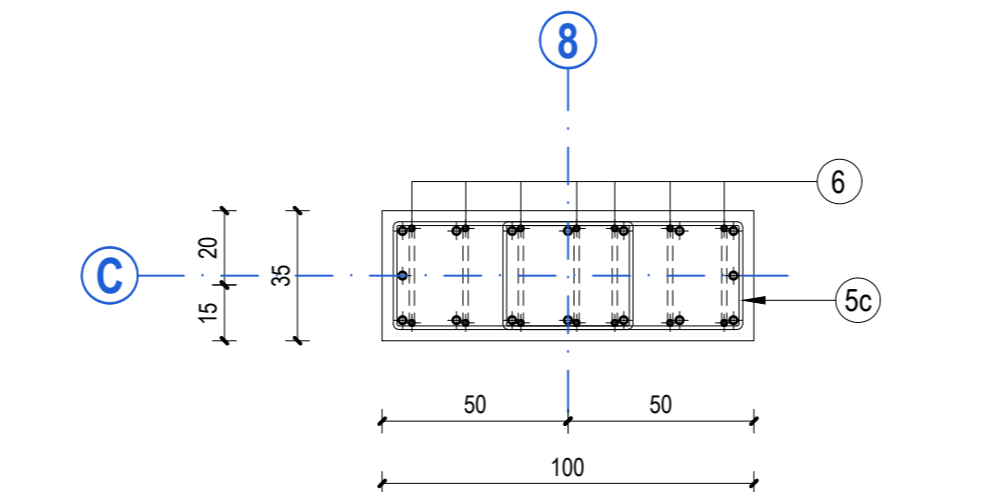
SEZIONE 2



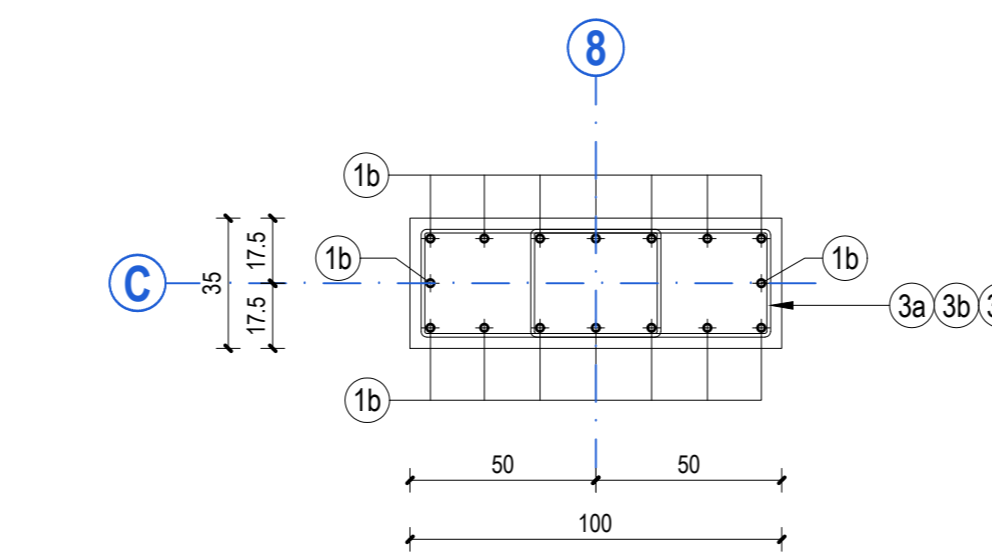
SEZIONE 1



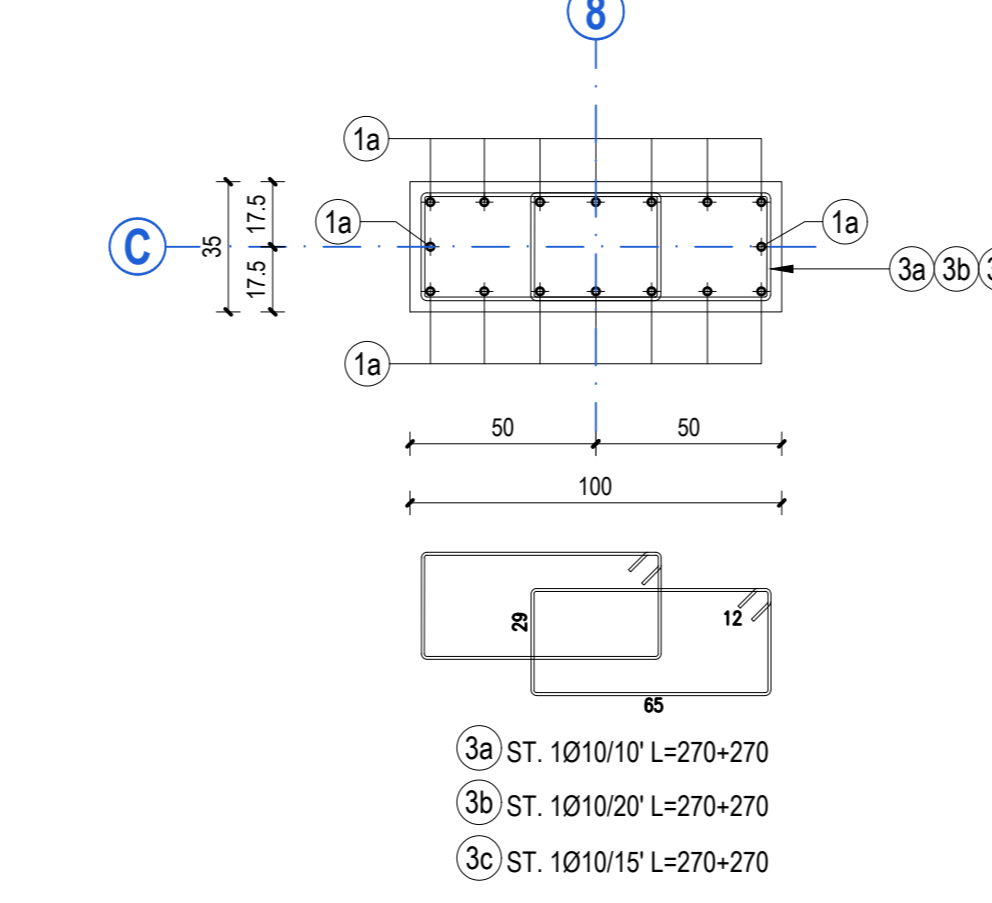
SEZIONE 3



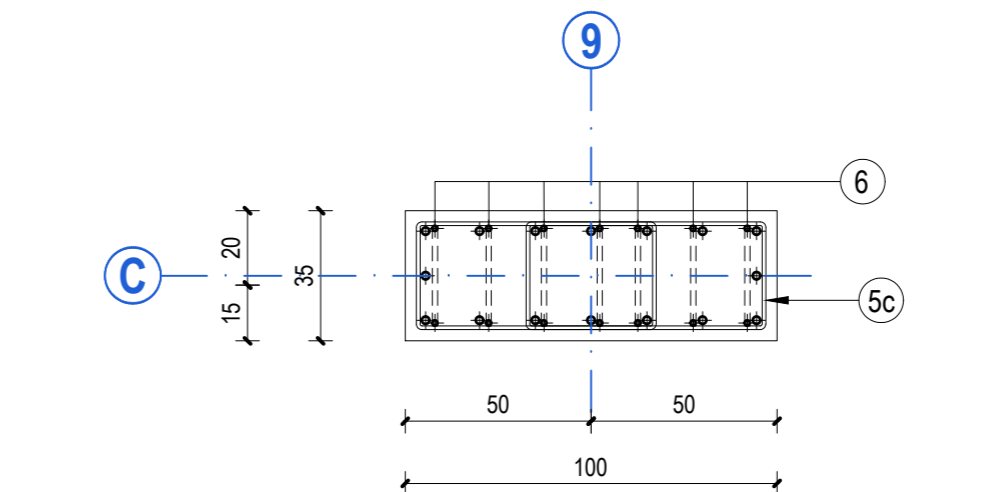
SEZIONE 2



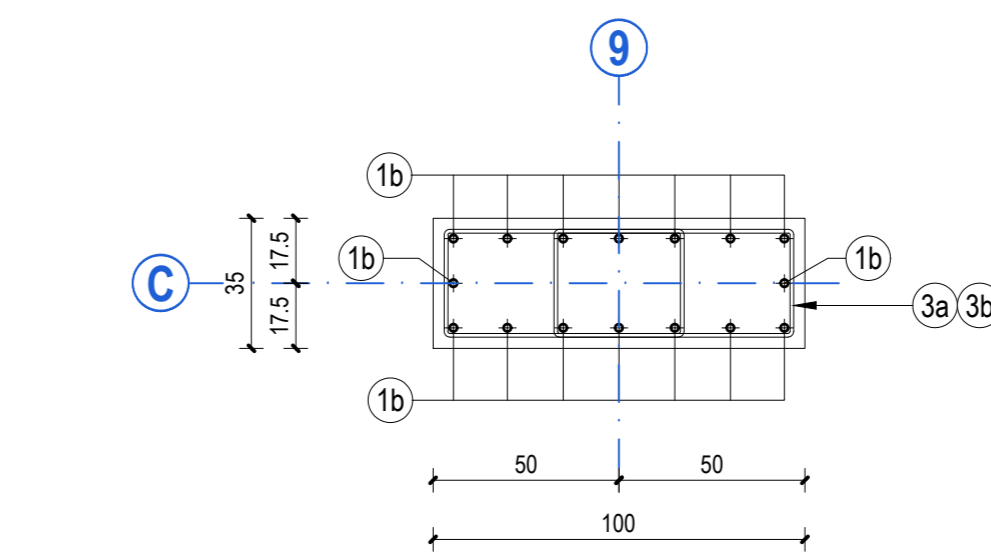
SEZIONE 1



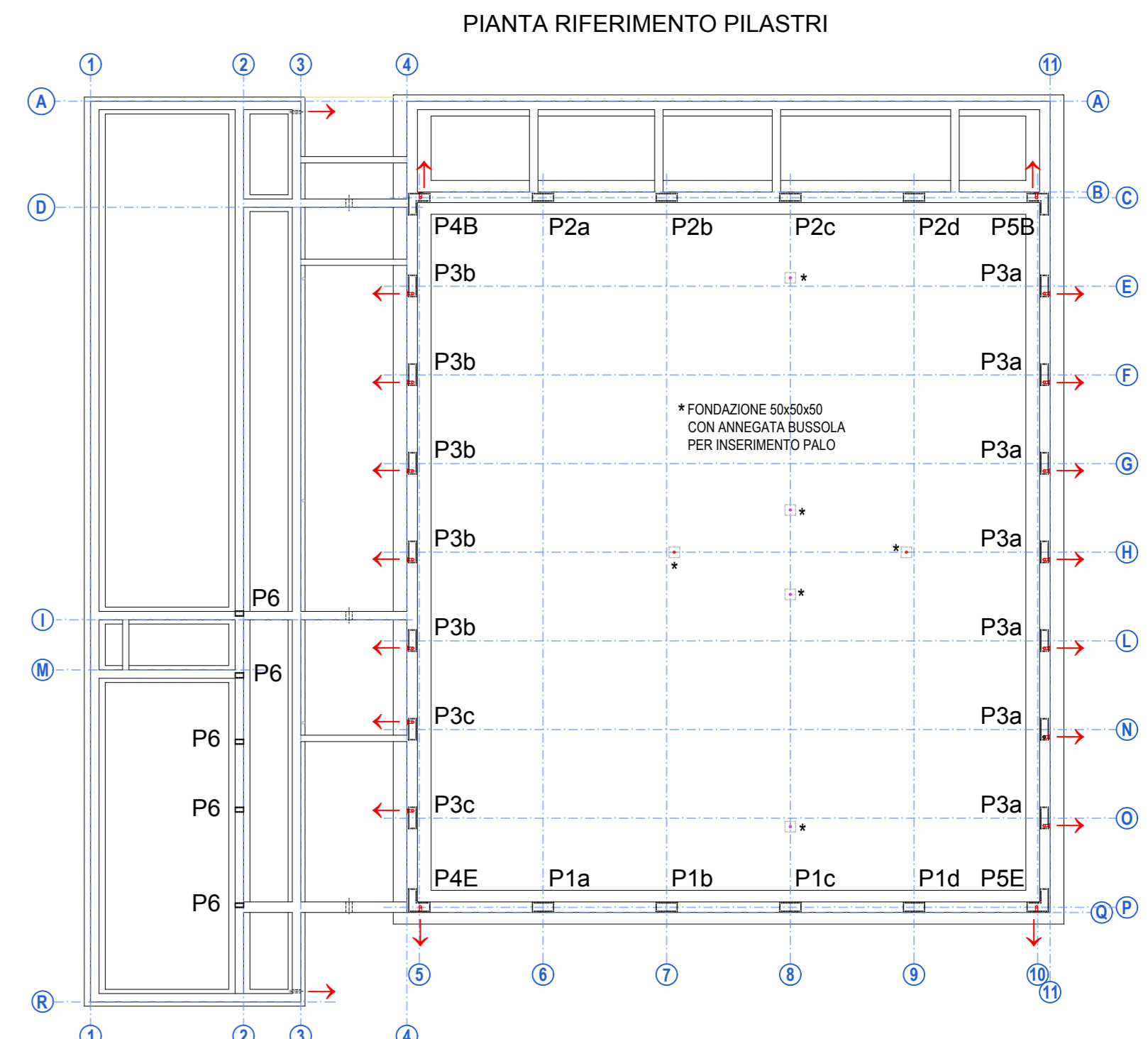
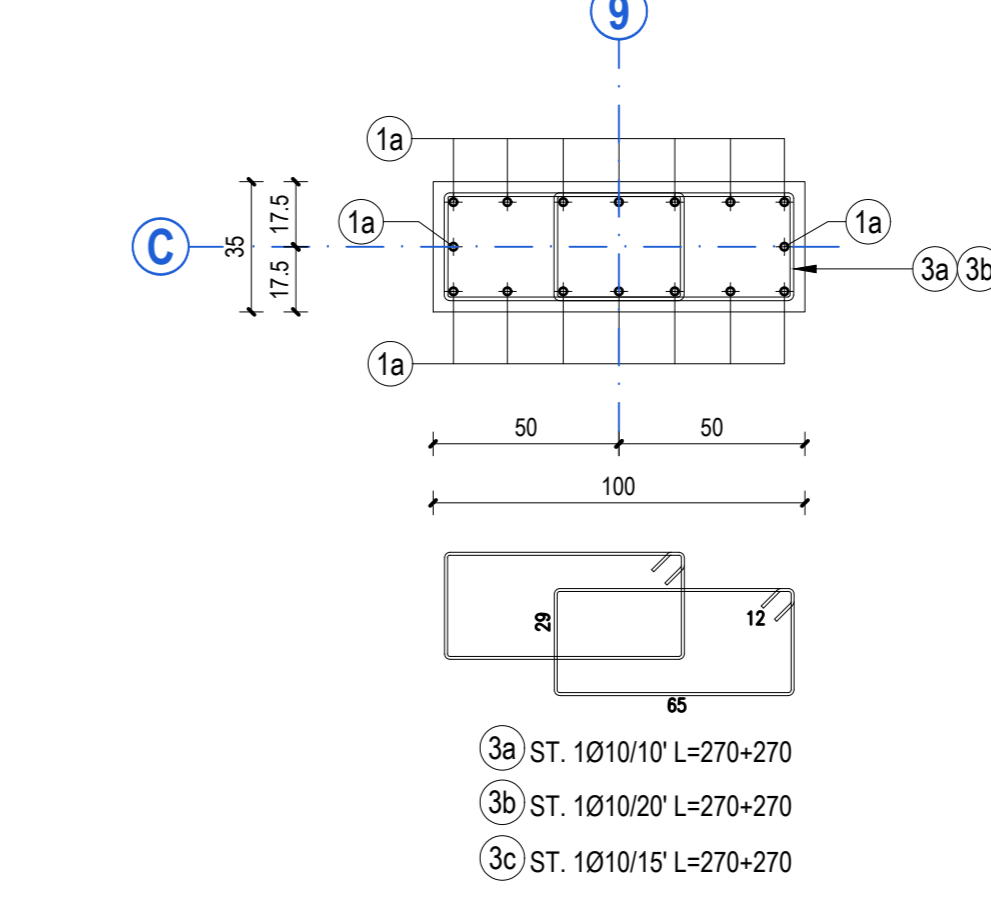
SEZIONE 3



SEZIONE 2



SEZIONE 1



Caratteristiche dei materiali: Cemento Portland CEM II/42.5, Acciaio per armatura B450S, Acciaio per ancoraggio B450S, Acciaio per ancoraggio B450S, Acciaio per ancoraggio B450S. Caratteristiche acciai per carpenterie metalliche: Acciaio S235, Acciaio S275, Acciaio S355. Caratteristiche acciai per carpenterie metalliche: Acciaio S235, Acciaio S275, Acciaio S355. Caratteristiche acciai per carpenterie metalliche: Acciaio S235, Acciaio S275, Acciaio S355.

Finanziato dall'Unione europea NextGenerationEU. Dipartimento per lo sport. PIANO NAZIONALE DI RIPRESA E RESILIENZA - PNRR Finanziato dall'Unione Europea Next Generation EU SPORT MS C2 3.1 Cluster 1. Realizzazione di un nuovo impianto sportivo LA PALESTRA PER TUTTI. Ing. Marcello Bianchini Frassinelli. Progettato da: A.C.T.R.E. P.A.R.L. Studio T.E.C.N.O. S.p.A. Elaborato da: GRENTI S.p.A. Progetto ESECUTIVO. OGGETTO: STRUTTURE. TITOLO: ARMATURA PILASTRI P2A-B-C-D. PE.AS.ST.26. DATA: 09.08.2024.